

NOTES:

1. LAST DASH NO. "XXX" INDICATES MICRON SIZE OF THRU HOLE  
Ex. SS-CF-1-200 -INDICATES 200 MICRON THRU HOLE
2. DASH "CAL" INSERTED INTO PART NUMBER PRIOR TO MICRON SIZE INDICATES FLOW CALIBRATED.  
Ex. SS-CF-1-CAL-XXX
3. Ø1/8" BOTH SIDES, LEAVING A 0.010" WALL IN THE CENTER
4. TYP. 2 PLCS.

REV	DESCRIPTION	INCORP BY	DATE
A	ADDED RADII	J. SCHUSTER	3/28/2016

Specifications

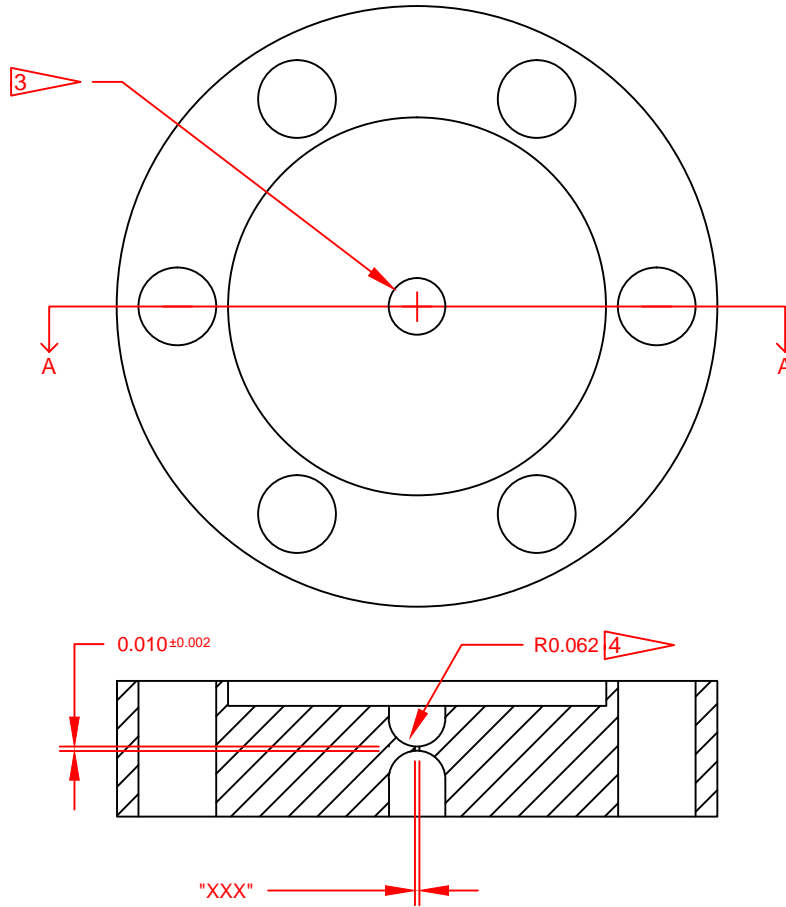
Diameter	34mm (1.339")
Thickness	7.7mm (0.303")
Centering	±0.250mm (±0.00984")
Orifice Diameter	3 - 1000µ (0.000118" - 0.0394")

Optically Measured Tolerances

Diameter	Tolerance +/-
3 - 5 µm	20%
6 µm	15%
7 - 149 µm	10%
150+ µm	5%

Flow Calibrated Tolerances

Diameter	Dia +/-	Flow +/-
5 - 10 µm	10%	20%
12 - 149 µm	5%	10%
150 µm +	2.5%	5%



SECTION A-A

THIS DOCUMENT CONTAINS INFORMATION THAT IS CONFIDENTIAL AND PROPRIETARY TO LENOX LASER. THIS DOCUMENT IS FURNISHED ON THE UNDERSTANDING THAT THE DOCUMENT AND THE INFORMATION IT CONTAINS WILL NOT BE COPIED OR DISCLOSED TO OTHERS EXCEPT WITH THE WRITTEN CONSENT OF LENOX LASER. WILL NOT BE USED FOR ANY PURPOSE OTHER THAN CONDUCTING BUSINESS WITH LENOX LASER, AND WILL BE RETURNED AND ALL FURTHER USE DISCONTINUED UPON REQUEST BY LENOX LASER.

UNLESS OTHERWISE SPECIFIED ALL DIMENSIONS ARE IN INCHES  
DECIMAL VALUES ARE SHOWN WITH DECIMAL TOLERANCE VALUES  
DECIMAL .X = ± .1 TOLERANCES APPLIED TO THE PRINT  
PLACES .XX = ± .01  
IN THE .XXX = ± .005  
PRINT .XXXX = ± .0005  
FRACTIONAL AND ANGULAR VALUES ARE SHOWN WITH FRACTIONAL OR ANGULAR TOLERANCE VALUES.  
FRACTIONS = ± 1/16  
ANGLES = ± 1°

Material  
LDS VACUUM SHOPER  
PN. 133-000-D-OS  
OR EQUIVALENT

Used On

-



APPROVALS	DATE
DRAWN C. DRAPER	1/11/2016
CHK J. SCHUSTER	2/10/2016
ENGR J. SCHUSTER	2/10/2016
SHEET: 1 OF 1	DO NOT SCALE

Drawing Number  
A SS-CF-1-XXX

REV  
A

Drawing Name  
SS 1 SIDED CONFLAT