

NOTES:

1. LAST DASH NO. "XXX" INDICATES MICRON SIZE SLIT
Ex. G-SLIT-1-DISC-25 -INDICATES 25 MICRON SLIT
2. EDGE CHAMFER 0.015" MAX
3. NO COATING IN THIS AREA TO CREATE SLIT

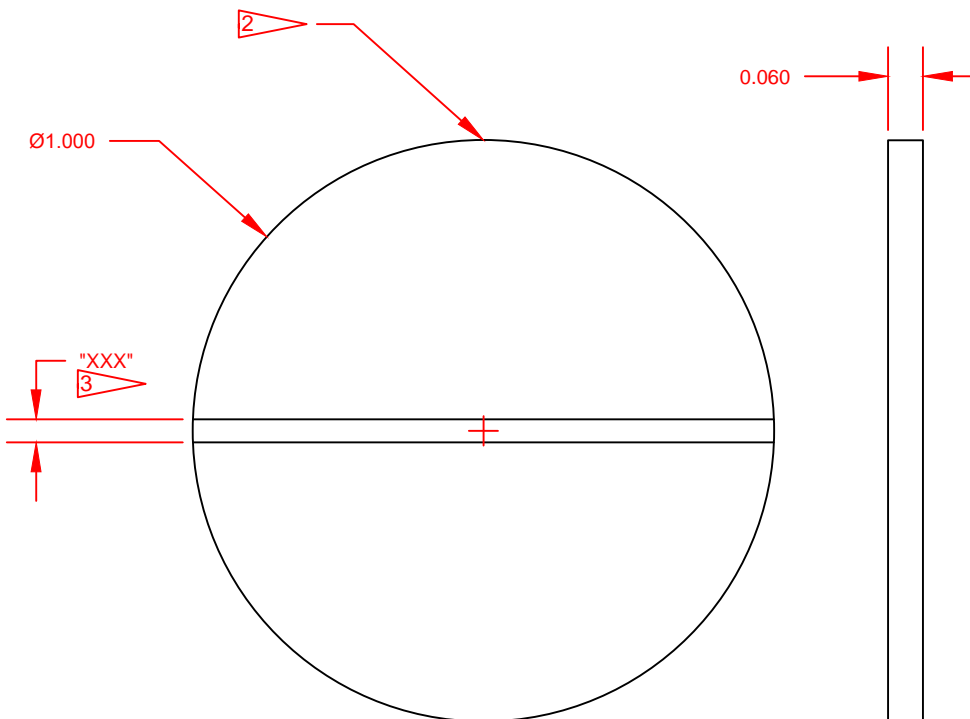
REV	DESCRIPTION	INCORP BY	DATE
A	CORRECTED TOLERANCES	J. DEMEO	4/27/2018

Specifications

Diameter	1in ± 0.005in (25.4mm)
Thickness	0.060in (1.5mm)
Flatness	<5µm
Polish	20-10
Optical Density	2.8 ± 0.2

Slit Tolerances

Width	Tolerance +/-
All Sizes	+/- 5% of slit width, 1µm minimum



THIS DOCUMENT CONTAINS INFORMATION THAT IS CONFIDENTIAL AND PROPRIETARY TO LENOX LASER. THIS DOCUMENT IS FURNISHED ON THE UNDERSTANDING THAT THE DOCUMENT AND THE INFORMATION IT CONTAINS WILL NOT BE COPIED OR DISCLOSED TO OTHERS EXCEPT WITH THE WRITTEN CONSENT OF LENOX LASER. WILL NOT BE USED FOR ANY PURPOSE OTHER THAN CONDUCTING BUSINESS WITH LENOX LASER, AND WILL BE RETURNED AND ALL FURTHER USE DISCONTINUED UPON REQUEST BY LENOX LASER.

UNLESS OTHERWISE SPECIFIED ALL DIMENSIONS ARE IN INCHES
DECIMAL VALUES ARE SHOWN WITH DECIMAL TOLERANCE VALUES

DECIMAL	.X = ± .1	TOLERANCES
PLACES	.XX = ± .01	APPLIED
IN THE	.XXX = ± .005	TO THE
PRINT	.XXXX = ± .0005	PRINT

FRACTIONAL AND ANGULAR VALUES ARE SHOWN WITH FRACTIONAL OR ANGULAR TOLERANCE VALUES.

FRACTIONS = ± 1/16
ANGLES = ± 1°

Material
SODA LIME GLASS
WITH HIGH REFLECTIVE
CHROME (HRC) COATING



Drawing Number
A G-SLIT-1-DISC-XXX

REV
A

Used On

-

APPROVALS	DATE
DRAWN C. DRAPER	4/8/2016
CHK J. SCHUSTER	4/15/2016
ENGR J. SCHUSTER	4/15/2016
SHEET: 1 OF 1	DO NOT SCALE

Drawing Name
PRECISION OPTICAL SLIT